



23 Nash Green Staplegrove, Taunton TA2 6BZ

£360,000



This 4 bedroomed detached house in the popular area of Staplegrove within easy reach of the town centre and train station provides immaculately presented contemporary accommodation with 2 reception rooms, South facing conservatory leading to landscaped gardens, garage and driveway parking.





Features

- Entrance hall
- Living room
- Dining room
- Conservatory with French doors to garden
- Fitted kitchen with ceramic hob
- Utility room with door to garden
- Cloakroom
- Master bedroom with ensuite shower room
- 2 further double bedrooms
- Bedroom 4
- Family bathroom

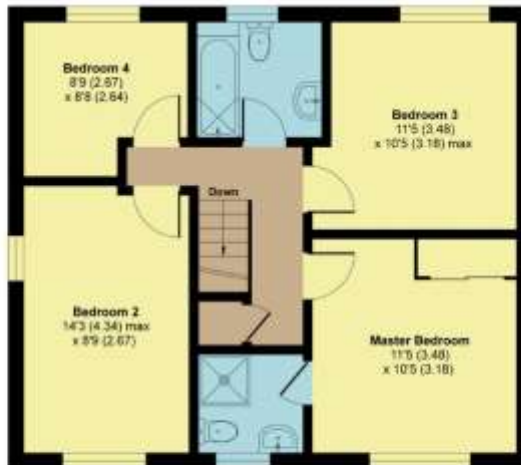
- Gardens to front and rear
- Garage and driveway parking
- Gas fired central heating
- Double glazing

- Council tax band E

23 Nash Green, Staplegrove, Taunton, TA2 6BZ

Approximate Area = 1328 sq ft / 123 sq m (includes garage)

For identification only - Not to scale



Viewing strictly through the selling agents:

Robert Cooney

Corporation Street, Taunton,
Somerset TA1 4AW

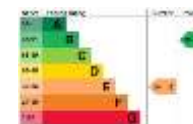
Telephone 01823 230 230

E-mail taunton@robertcooney.co.uk

Website robertcooney.co.uk



Floor plan produced in accordance with RICS Property Measurement Standards incorporating International Property Measurement Standards (IPMS Residential). © Robinson 2021. Produced for Robert Cooney REF: 710291



For clarification, we wish to inform prospective purchasers that: these particulars are set out as a general outline only for the guidance of intended purchasers, and do not constitute, nor constitute part of, an offer or contract; all descriptions, dimensions, references to condition and necessary permission for use and occupation, and other details, are given without responsibility and any intending purchasers should not rely on them as statements or representation of fact, but must satisfy themselves by inspection or otherwise as to the correctness of each of them; no person in the employment of Robert Cooney has any authority to make or give any representation or warranty whatever in relation to this property; we have not carried out a detailed survey nor tested the services, appliances and specific fittings.

**robert
cooney**